

CAT6a 24 PORT S/FTP FAST ETHERNET PATCH PANELS (IDC Type)



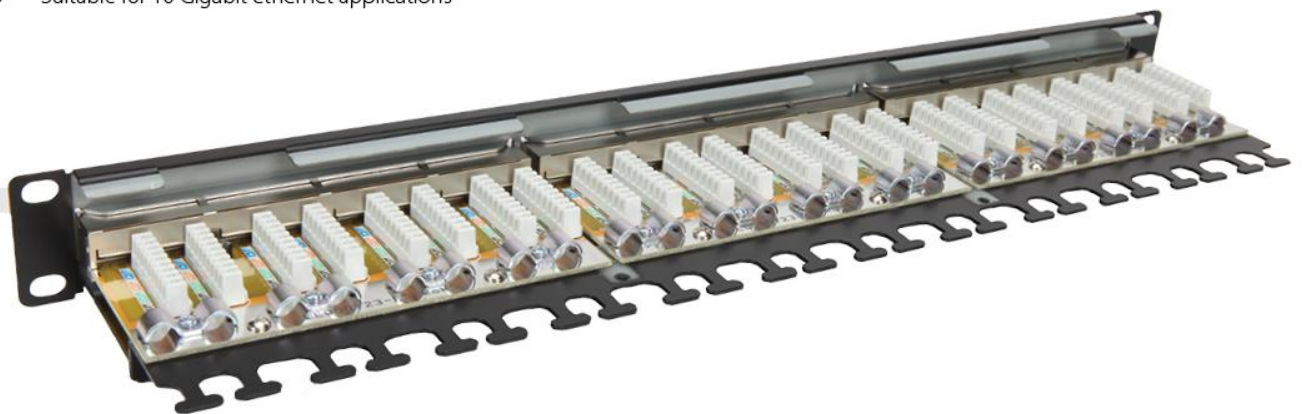
TTAF S/FTP CAT 6A tray type patch panel has standard surpassing transmission performance. It is designed to be quick and easy to install and terminate.

FEATURES

- » Compatible with CAT 6A component performance (ISO/IEC 11801)
- » 1U 24-port S/FTP tray patch panel
- » Silkscreened port numbers on panel front for facilitate easy reading
- » UL 1863 safety listed
- » UL 94V-0 flammability standard
- » CAT 6A UTP tray type patch panel available
- » Suitable for 10 Gigabit ethernet applications

CERTIFICATES AND TEST NUMBERS

- » UL CODE: Patch panels shall be UL Listed under file number E357669
- » 3P CODE: P/N TTAF Attestation of Conformity No.113796



Art No

FO-SP-4000-T24PC6A

Product Description

1U 24 Port S/FTP Cat6a Patchpanel (110 Krone IDC Closed)

