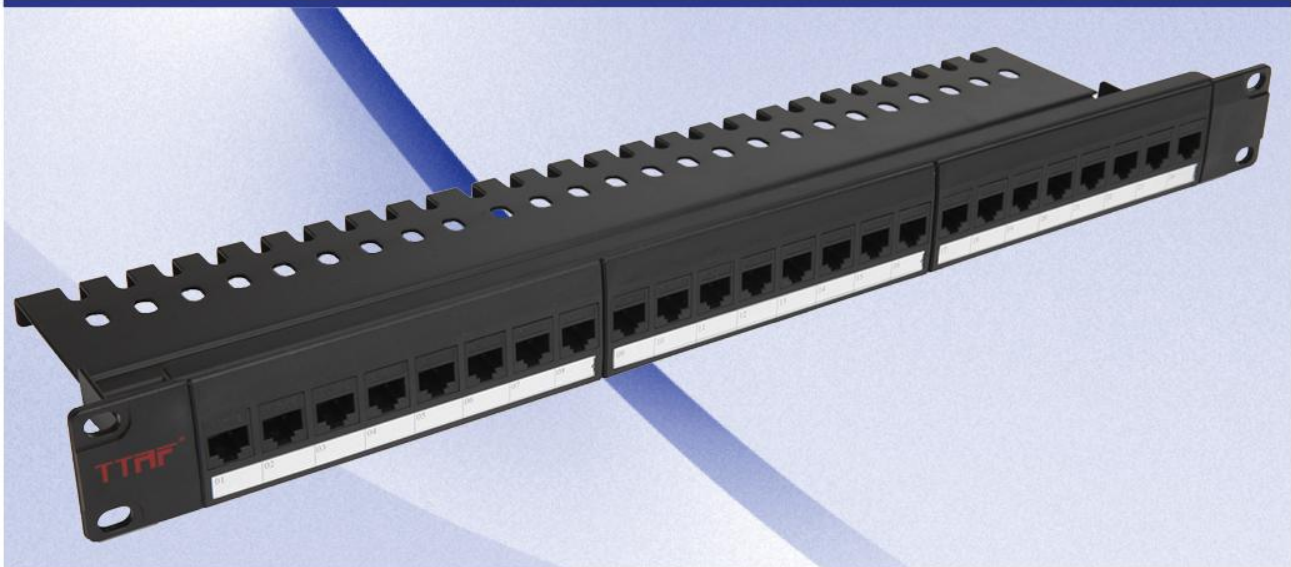


## NETWORK COMMUNICATION SOLUTIONS

### CAT5 iPORT SERIES

#### CAT5e 24 PORT UTP FAST ETHERNET PATCH PANELS ( In-Line Coupler Type )



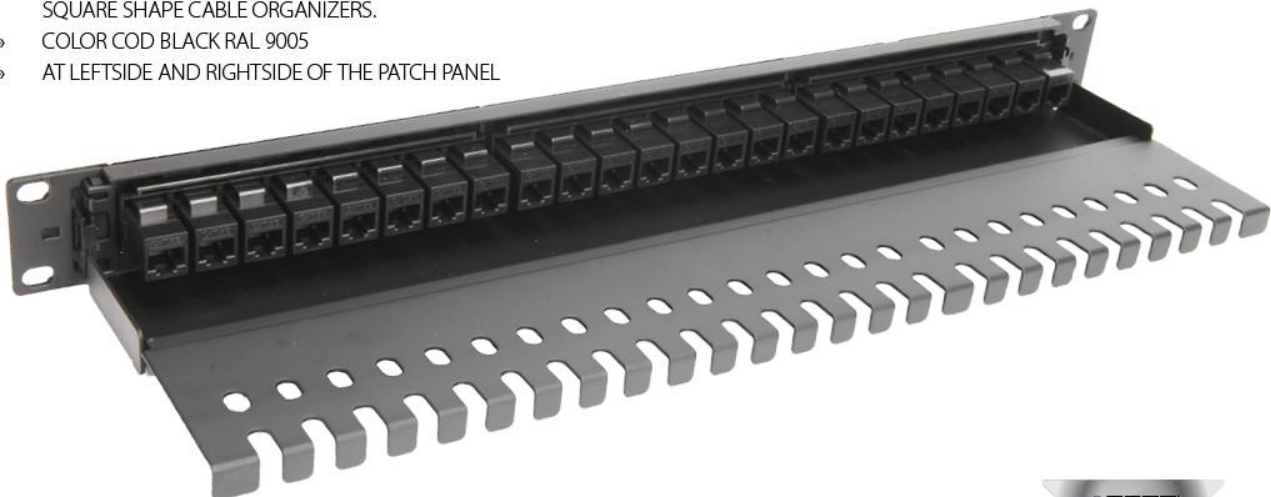
#### SPECIFICATIONS

- » 1U HEIGHT= 44,45 mm
- » 19 INCH WIDTH= 483 mm
- » 8\*3=24 =NUMBER OF PORTS
- » UTP ( unshielded twisted pair ) RJ45 Connector
- » CATEGORY 5&6 Compatible
- » METAL CHASSIS BODY
- » RUSTPROOF METAL BODY
- » PORT NUMERATORS



#### FEATURES

- » PLUG TO PLUG RJ 45 CONNECTORS
- » UTP MATING KEYSTONES
- » CIRCULAR BACKSIDE OF METAL CHASSIS BODY HALF-MOON SHAPE, SQUARE SHAPE CABLE ORGANIZERS.
- » COLOR COD BLACK RAL 9005
- » AT LEFTSIDE AND RIGHTSIDE OF THE PATCH PANEL



Art No

Product Description

TTAF  
FIBER OPTIC SYSTEMS

FO-PP-1U-CAT5-24

1U 24 Port UTP Cat5e Patchpanel ( In-line UTP Coupler Type )